

# Villa Chateau

Apartments, LLC.

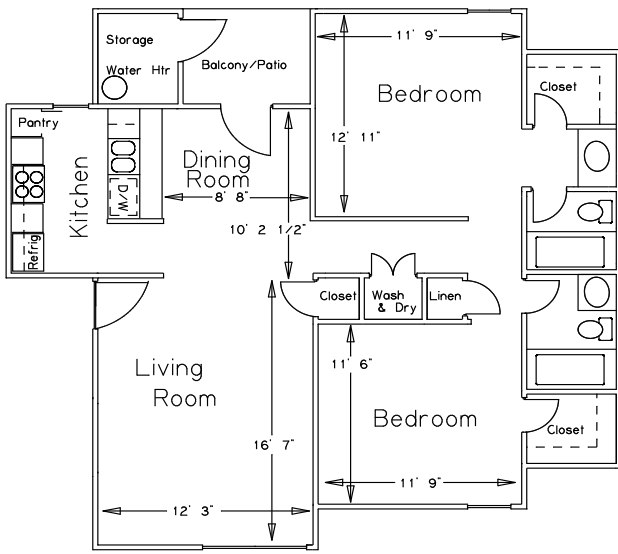
2205 Beckett Street

Bossier City, LA 71111

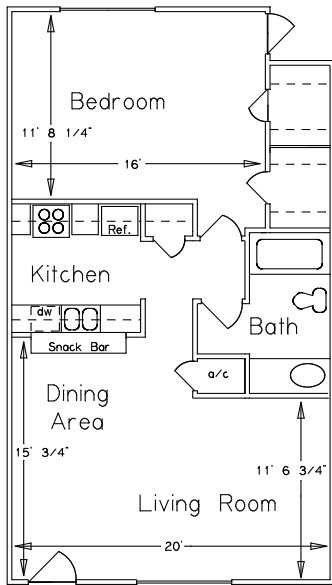
**(318) 742-4902** Fax (318) 742-6658

villachateau@att.net

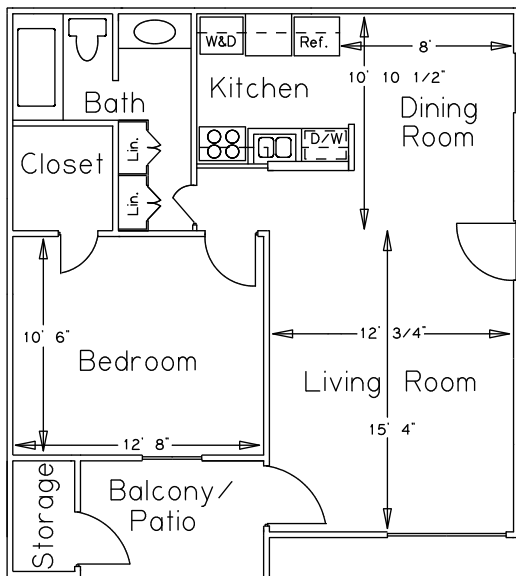
[www.landmarkrealty.org](http://www.landmarkrealty.org)



- **TWO BEDROOM** RENT \$810  
**TWO BATH** DEPOSIT \$250  
**935 Square Feet**



- **ONE BEDROOM** RENT \$630  
**ONE BATH** DEPOSIT \$200  
**761 Square Feet**



- **ONE BEDROOM** RENT \$630.00  
**ONE BATH** DEPOSIT \$200  
**660 Square Feet**

- Washers & Dryers in select Apartments
- Ceiling Fans
- Walk in Closets
- Private Patio & Balcony
- Private Storage
- **Fitness Center accessible 24 hours**
- Reserved Parking
- Laundry Facilities accessible 24 hours
- Fire Extinguishers in each Apartment
- Smoke Detectors in each Apartment
- Dishwasher & Garbage Disposal
- Frost Free Refrigerators
- Cable or Satellite Television Available
- **24 hour emergency maintenance**

**\$40.00 Application Fee.** No Pets Allowed. Credit and criminal background check required. **\*\*\*Proof of renters insurance is required with minimum \$300,000 liability and Villa Chateau as additional named insured\*\*\***

Come and see what you have been missing in luxury apartment living. There is no comparison to the choice location and selection of amenities. We are within walking distance of Planet Fitness, Pierre Bossier Mall, shopping centers, a movie theater, Ollie's Bargain Outlet, churches, banks, restaurants, and Pharmacies (Walgreens & CVS). We are only minutes from the Target/Best Buy Shopping center, Sam's Club, Kroger's Market Place, Hobby Lobby, Buffalo Wild Wings, Whataburger, Chipotle, Jimmy Johns, Panera Bread, Panda Express, Twisted Root Burger as well as several other retail outlets and restaurants nearby. The Louisiana Boardwalk and downtown Shreveport are only a five minute drive away!

You also have access to a fitness center 24/7 with exercise cycles, treadmills, an elliptical trainer, and a Vectra On-Line 3800 machine for body building.

Each apartment is spacious and ready for your individual touches. Our caring professional management and maintenance team is here to assist you.

**DIRECTIONS:** I-20 in Bossier City to the Benton Road exit (number 20B), go north on Benton Road, turn right on Beckett Street.



Professionally managed by

Landmark Realty, LLC.

Parkland Villa Apts., LLC  
Sherwood Forest Apts., LLC  
Misty Hollow Apts., LLC.

South Bossier Mobile Home Community, LLC

