

# Misty Hollow

Apartments, LLC.

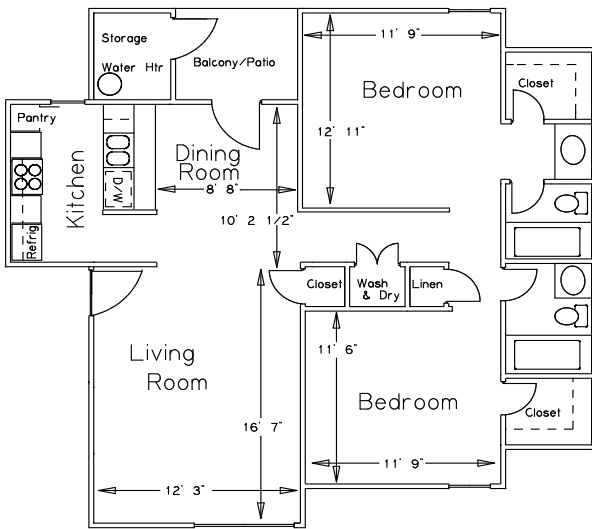
2826 Misty Lane

Bossier City, LA 71111

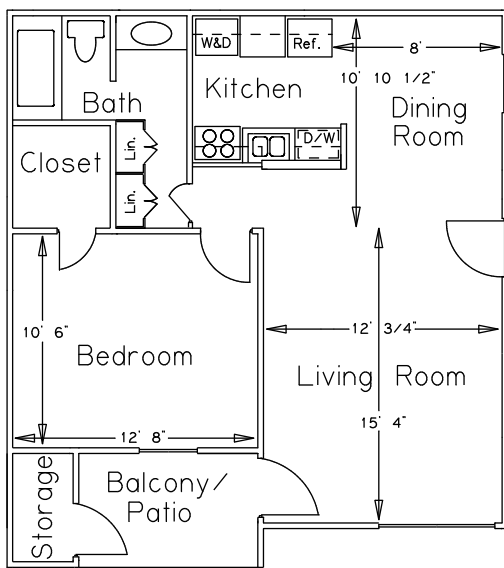
(318) 742-2665 Fax (318) 752-0820

Misty\_hollow@att.net

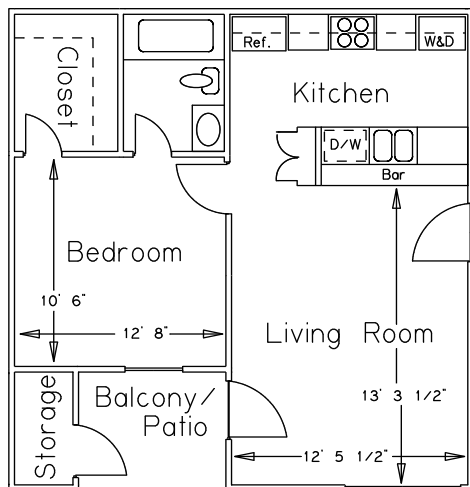
[www.landmarkrealty.org](http://www.landmarkrealty.org)



- **TWO BEDROOM** RENT \$810  
**TWO BATH** DEPOSIT \$250  
**935 Square Feet**



- **ONE BEDROOM** RENT \$630  
**ONE BATH** DEPOSIT \$200  
**650 Square Feet**



- **ONE BEDROOM** RENT \$610  
**ONE BATH** DEPOSIT \$200  
**520 Square Feet**

- Washers & Dryers in each Apartment
- Ceiling Fans
- Walk in Closets
- Private Patio & Balcony
- Private Storage
- Fire Extinguishers in each Apartment
- Smoke Detectors in each Apartment
- Dishwasher & Garbage Disposal
- Frost Free Refrigerators
- Cable Television Available
- **24 hour emergency maintenance**

\$40.00 Application Fee. No Pets. Credit and criminal background check required. **\*\*\*Proof of renters insurance is required with minimum \$300,000 liability and Misty Hollow as additional insured\*\*\***

Access to I-20, I-220, bus lines to downtown, Barksdale AFB. We are within walking distance of Pierre Bossier Mall, shopping centers, a movie theater, Ollie's Bargain Outlet, churches, banks, restaurants, and Pharmacies (Walgreens & CVS), Applebee's, Five Guys Burger, the Target/Best Buy Shopping center, Sam's Club, Kroger's Market Place, Hobby Lobby, Buffalo Wild Wings, Whataburger, Chipotle, Jimmy Johns, Panera Bread, Panda Express, as well as several other retail outlets and restaurants nearby. The Louisiana Boardwalk and downtown Shreveport are only a five minute drive away!

**\*\*Come see our 1 Bedroom Model!\*\***

Each apartment is spacious and ready for your individual touch. You have your own washer and dryer, walk in closets, and private patio and storage.

All of this and more is yours at Misty Hollow so don't delay. Come in and see us! Our caring, professional management and maintenance team are here to assist you.

**DIRECTIONS:** From I-20 take the Airline Drive exit (number 22), go North on Airline Dr. Approximately 2 blocks between East Texas Street and Shed Road, turn right on Misty Lane at Circle K.



Professionally managed  
By Landmark Realty, LLC.



Parkland Villa Apts., LLC  
Sherwood Forest Apts., LLC  
Villa Chateau Apts., LLC  
South Bossier Mobile Home Community, LLC

