

Misty Hollow

Apartments, LLC.

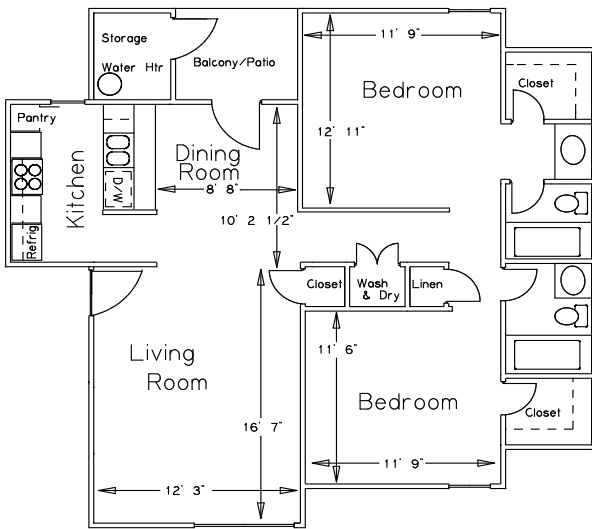
2826 Misty Lane

Bossier City, LA 71111

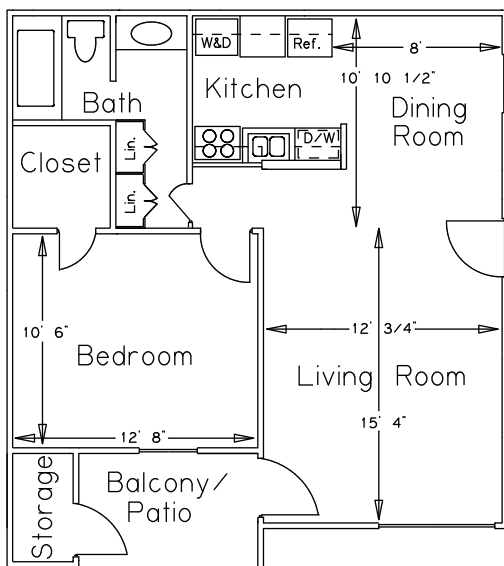
(318) 742-2665 Fax (318) 752-0820

Misty_hollow@att.net

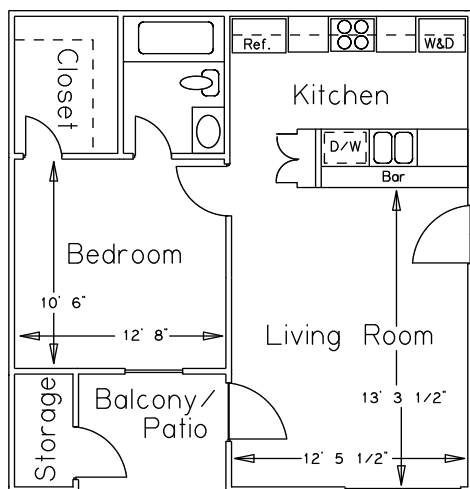
www.landmarkrealty.org



- **TWO BEDROOM** RENT \$810
TWO BATH DEPOSIT \$250
935 Square Feet



- **ONE BEDROOM** RENT \$630
ONE BATH DEPOSIT \$200
650 Square Feet



- **ONE BEDROOM** RENT \$610
ONE BATH DEPOSIT \$200
520 Square Feet

- Washers & Dryers in each Apartment
- Ceiling Fans
- Walk in Closets
- Private Patio & Balcony
- Private Storage
- **Fitness Center accessible 24 hours**
- Fire Extinguishers in each Apartment
- Smoke Detectors in each Apartment
- Dishwasher & Garbage Disposal
- Frost Free Refrigerators
- Cable or Satellite Television Available
- **24 hour emergency maintenance**

\$40.00 Application Fee. No Pets. Credit and criminal background check required. *****Proof of renters insurance is required with minimum \$300,000 liability and Misty Hollow as additional named insured*****

Access to I-20, I-220, bus lines to downtown, Barksdale AFB. We are within walking distance of Pierre Bossier Mall, shopping centers, a movie theater, Ollie's Bargain Outlet, churches, banks, restaurants, and Pharmacies (Walgreens & CVS), Applebee's, Five Guys Burger, the Target/Best Buy Shopping center, Sam's Club, Kroger's Market Place, Hobby Lobby, Buffalo Wild Wings, Whataburger, Chipotle, Jimmy Johns, Panera Bread, Panda Express, Twisted Root Burger as well as several other retail outlets and restaurants nearby. The Louisiana Boardwalk and downtown Shreveport are only a five minute drive away!

****Come see our 1 Bedroom Model!*****

Each apartment is spacious and ready for your individual touch. You have your own washer and dryer, walk in closets, and private patio and storage. You also have your choice of Satellite or Cable television.

You have access to a 24 hour fitness center with a 9-station universal exercise machine for body building with exercise cycles, treadmills, an elliptical trainer, and recumbent bicycle. All of this and more is yours at Misty Hollow so don't delay. Come in and see us! Our caring, professional management and maintenance team is here to assist you.

DIRECTIONS: From I-20 take the Airline Drive exit (number 22), go North on Airline Dr. Approximately 2 blocks between East Texas Street and Shed Road, turn right on Misty Lane at Circle K.



Professionally managed
By Landmark Realty, LLC.

Parkland Villa Apts., LLC
Sherwood Forest Apts., LLC
Villa Chateau Apts., LLC
South Bossier Mobile Home Community, LLC

