

# Misty Hollow

Apartments, LLC.

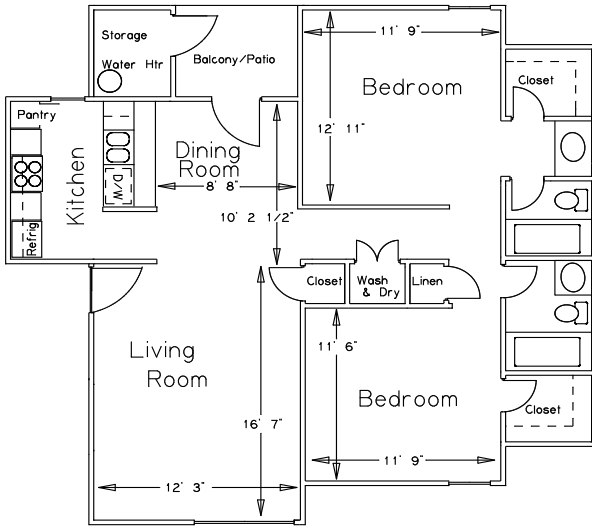
2826 Misty Lane

Bossier City, LA 71111

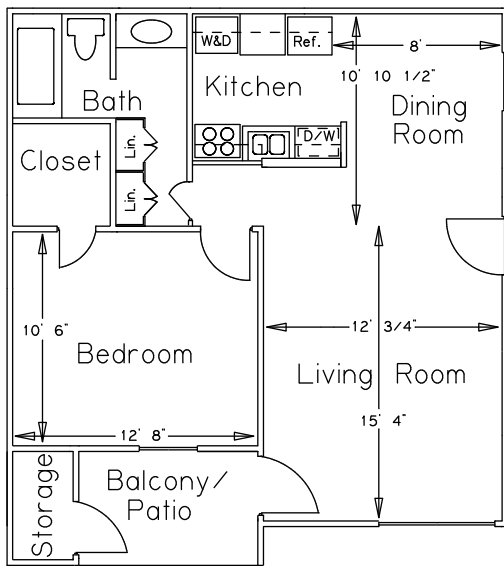
(318) 742-2665 Fax (318) 752-0820

Misty\_hollow@att.net

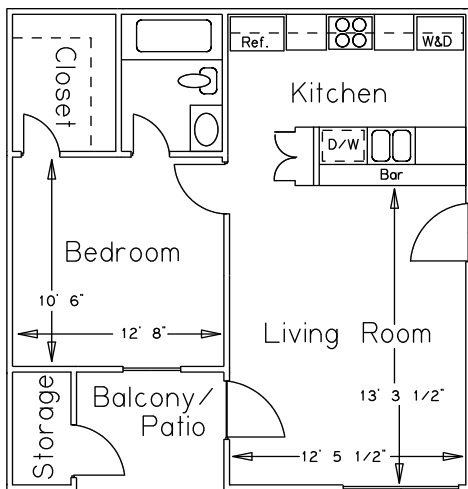
[www.landmarkrealty.org](http://www.landmarkrealty.org)



- **TWO BEDROOM** RENT \$970  
**TWO BATH** DEPOSIT \$300  
**935 Square Feet**



- **ONE BEDROOM** RENT \$790  
**ONE BATH** DEPOSIT \$300  
**650 Square Feet**



- **ONE BEDROOM** RENT \$770  
**ONE BATH** DEPOSIT \$300  
**520 Square Feet**

- Washers & Dryers in each Apartment
- Ceiling Fans
- Walk in Closets
- Private Patio & Balcony
- Private Storage
- Fire Extinguishers in each Apartment
- Smoke Detectors in each Apartment
- Dishwasher & Electric Stove
- Frost Free Refrigerators
- Cable Television Available
- **24 hour emergency maintenance**

\$50.00 Application Fee. No Pets. Credit and criminal background check required. **\*\*\*Proof of renters insurance is required with minimum \$500,000 liability and Misty Hollow as additional interest\*\*\***

Access to I-20, I-220, bus lines to downtown, Barksdale AFB. We are within walking distance of Pierre Bossier Mall, shopping centers, Ollie's Bargain Outlet, churches, banks, Chilis, Sonic, Silver Star Cantina, El Jimador, and Pharmacies (Walgreens & CVS), Applebee's, China Flag Buffet, Freddy's, PJ's coffee, Johnny's Pizza, the Target/Best Buy Shopping center, Sam's Club, Kroger's Market Place, Hobby Lobby, TJ Maxx, 5 Below, Buffalo Wild Wings, Whataburger, Chipotle, Jimmy Johns, Panda Express, as well as several other retail outlets and restaurants nearby.

Each apartment is spacious and affordable with your own washer and dryer, walk in closets, and private patio and storage.

Our caring, professional management and maintenance team are here to assist you.

**Schools:** K-5 Plantation, 6<sup>th</sup>-8<sup>th</sup> Green Acres Middle, 9<sup>th</sup>-12<sup>th</sup> Airline High

**DIRECTIONS:** From I-20 take the Airline Drive exit (number 22), go North on Airline Dr. Approximately 2 blocks between East Texas Street and Shed Road, turn right on Misty Lane at Circle K.



Professionally managed  
By Landmark Realty, LLC.



Parkland Villa Apts., LLC  
Sherwood Forest Apts., LLC  
Villa Chateau Apts., LLC  
South Bossier Mobile Home Community, LLC

