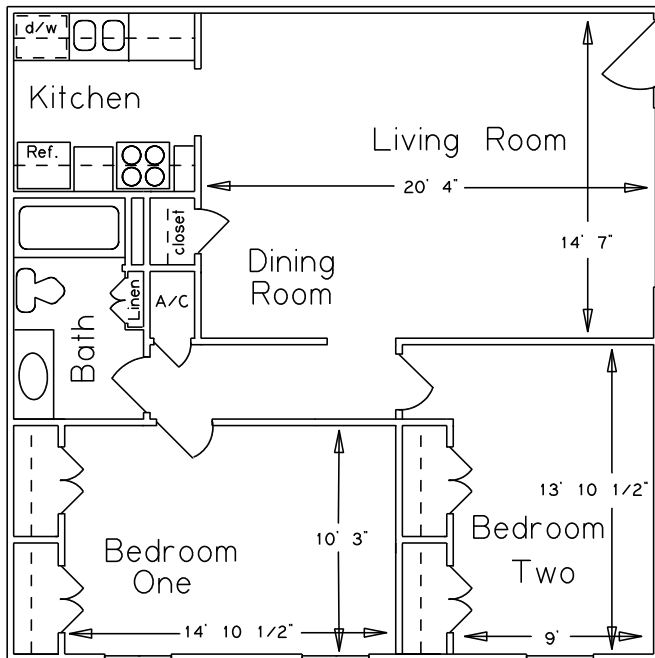
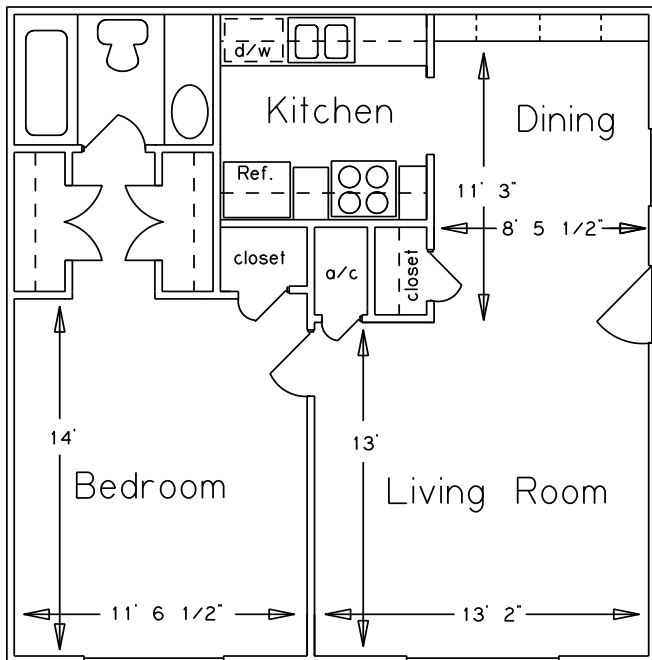


# Sherwood Forest Apartments



- Two Bedroom  
903 Square Feet



- One Bedroom  
691 Square Feet

If you enjoy quiet and comfortable apartment living, then Sherwood Forest is for you.

Our apartment homes provide a combination of value, comfort, quality and convenience that is unique. Each 1 and 2 bedrooms are spacious and comfortable. Ceiling fans, appliances including dishwasher, smoke detectors, fire extinguishers, air conditioned laundry facilities and vehicle parking permits for your convenience. Cable or satellite television available. No Pets. \$30.00 Application Fee. Credit and criminal background check required.

Take advantage of this valuable location, near Barksdale AFB, the Louisiana Boardwalk, shopping centers, banks, restaurants, bus line to downtown Shreveport and I-20.

Directions: From I-20 take the Barksdale Blvd Exit (Number 20B) and continue straight along Barksdale for 0.7 miles. Turn left on Waller Street towards the Fire Station. Turn left on Foster Street and continue to Sherwood Forest.

Our caring professional management and maintenance team is here to assist you.

## OFFICE

2307 Foster Street  
Bossier City, LA 71112  
(318) 742-5781 Fax (318) 742-6706  
[www.landmarkrealty.org](http://www.landmarkrealty.org)



Professionally managed by  
Landmark Realty, LLC.

